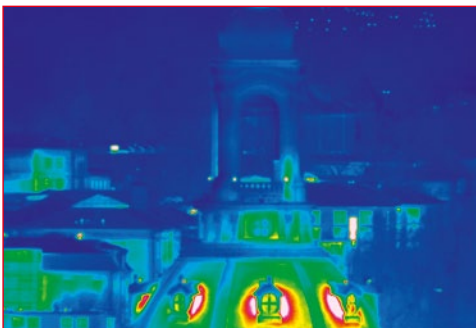
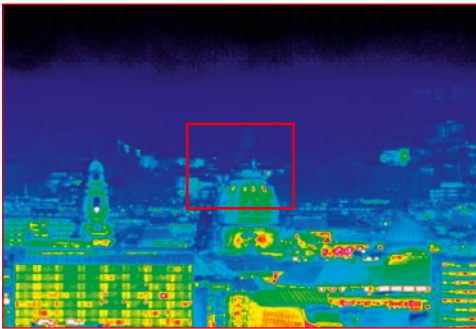
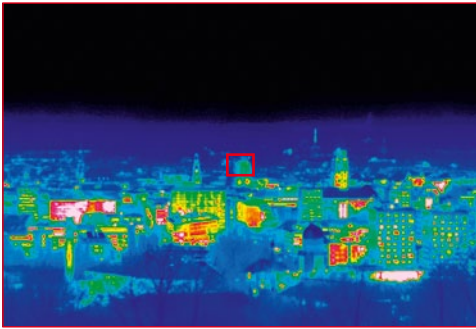


ImageIR[®] 8300 / 9300 Z

Thermal Imaging Systems

InfraTec

Europe's leading specialist for infrared sensors and measurement technology



Church of Our Lady in Dresden, lens focal length: (28 ... 850) mm

Cooled detectors with up to (1,280 × 1,024) IR pixels

Spectral range (3.7 ... 4.8) μm

30× infrared zoom lens

Detection range of 15 km for persons

Detection range of 18 km for vehicles

Quality made in Germany



www.InfraTec.eu

NEW



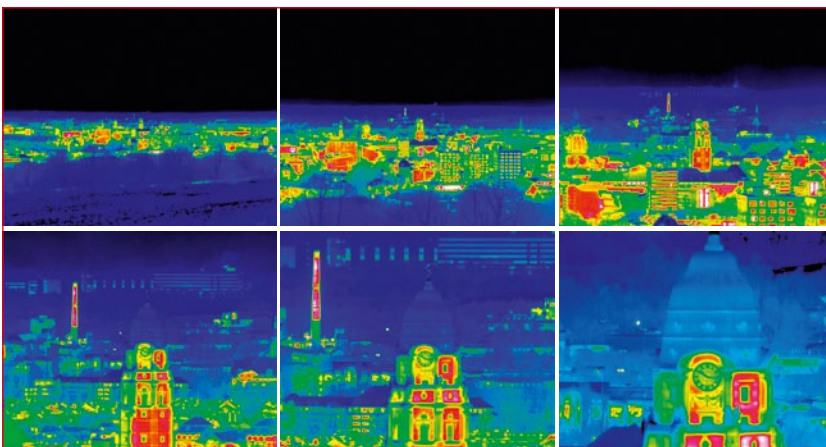
Spectral range	(3.7 ... 4.8) μm
Pitch	15 μm
Detector	InSb
Detector format (IR pixels)	(640 \times 512) or (1,280 \times 1,024)
Detector cooling	Stirling cooler
MTTF	> 10,000 operation hours
Temperature measuring range	(-10 ... 200) $^{\circ}\text{C}$; 500 $^{\circ}\text{C}^*$
Temperature resolution @ 30 $^{\circ}\text{C}$	0.02 K
Frame rate	Up to 100 Hz
Focus	Motor focus with absolut focussing
Focusing time	300 m up to ∞ : \leq 0.5 s
Lens focal length	(28 ... 850) mm (30 \times optical zoom)
Zoom setting time	(100 ... 850) mm: \leq 2 s
Visual field (640 \times 512) IR pixels	(19.8 \times 15.9) $^{\circ}$... (0.6 \times 0.5) $^{\circ}$
Visual field (1,280 \times 1,024) IR pixels	(39.8 \times 32.3) $^{\circ}$... (1.3 \times 1.0) $^{\circ}$
Close focus	(3 ... 50) m
Max. detection range (vehicle/human)	18/15 km
Max. identification range (vehicle/human)	12/9.5 km
Dynamic range	14 bit
Image synchronisation	Internal, IRIG-B*, external*
Interfaces	GigE Vision, RS232, USB 2.0
Power supply	(24 ... 28) VDC
Storage and operation temperature	(-40 ... 70) $^{\circ}\text{C}$, (-20 ... 50) $^{\circ}\text{C}$
Dimensions, weight	(36 \times 24 \times 27) cm, 17.5 kg

* Depending on model

The **ImagelR[®] camera series** is a high-precision measurement solution that has been an indispensable tool in **high-quality research, development and automation solutions** for many years.

However, there is more beyond ImagelR[®]: Due to the combination of the high-end infrared camera with a premium **30 \times zoom lens complex observation and investigation** are possible, such as border control, vehicle observation and monitoring of the environment or animals. The detection range is outstanding: vehicles can be detected up to 18 km and persons up to 15 km.

The rugged and exact **power zoom** together with the high-performance 30 \times zoom lens achieves a **continuously adjustable field of view** from (39.8 \times 32.3) $^{\circ}$ down to (1.3 \times 1.0) $^{\circ}$ with a detector format of (1,280 \times 1,024) IR pixels. Therefore, also objects being far away can be displayed with a high-resolution infrared image. The camera versions ImagelR[®] 8300 Z and ImagelR[®] 9300 Z with detector formats of **(640 \times 512) and (1,280 \times 1,024) IR pixels** are available. The customisable software interface offers **time coded real-time playback**.



Dresden town hall, lens focal length: (28 ... 850) mm

InfraTec GmbH
Infrarotsensorik und Messtechnik

Gostritzer Straße 61 - 63
01217 Dresden / GERMANY
Phone: +49 351 871-8630
Fax: +49 351 871-8727
E-mail: thermo@InfraTec.de