

Pecten EyeCam for Hensoldt Spotter 45: PEC-S45



Pecten EyeCam: PEC-S45

Can be used on Hensoldt **SPOTTER 45** and make it possible to capture important events on video or pictures.

Pictures and videos can be captured while observing as a standard spotting scope.

With the powerful Pecten software you can:

- Capture images
- Record videos

Easy to use

The Pecten EyeCam is easy to attach and to remove on the spotter ocular. No tools are necessary.

Connect the Pecten EyeCam to the PC with the standard USB Series "A" connector.
USB 3.0 or with USB2.0 with lower FPS.

No external power supply needed.

The camera is powered from the USB port.

The EyeCam is secured to the ocular with a clamping ring and gives a stable connection to the ocular.



Camera features

The camera inside Pecten EyeCam is equipped with a 5.0 Megapixel high-performance color CMOS-sensor.

Camera specifications

| Item | 5.0 Megapixel |
|---|---|
| Resolution | 2560 x 1920 (QSXGA) |
| Sensing Area (inch) | 1/2 |
| Sensor size | 5,63 x 4,22 mm |
| Max. Frame Rate (fps) (in 2x reduced res.) | 15,2 (2560x1920) 36,4 (1280x960) |
| Pixel clock | Max 104 MHz |
| Power Requirements | < 500mA |
| Connection Port | USB 3.0 Interface (USB 2.0 with lower FPS) |



Optec AS

Nedre Møllenberg gt 32
7014 Trondheim

Norway

Phone: +47 73 52 48 00

Mail: optec@optec.no

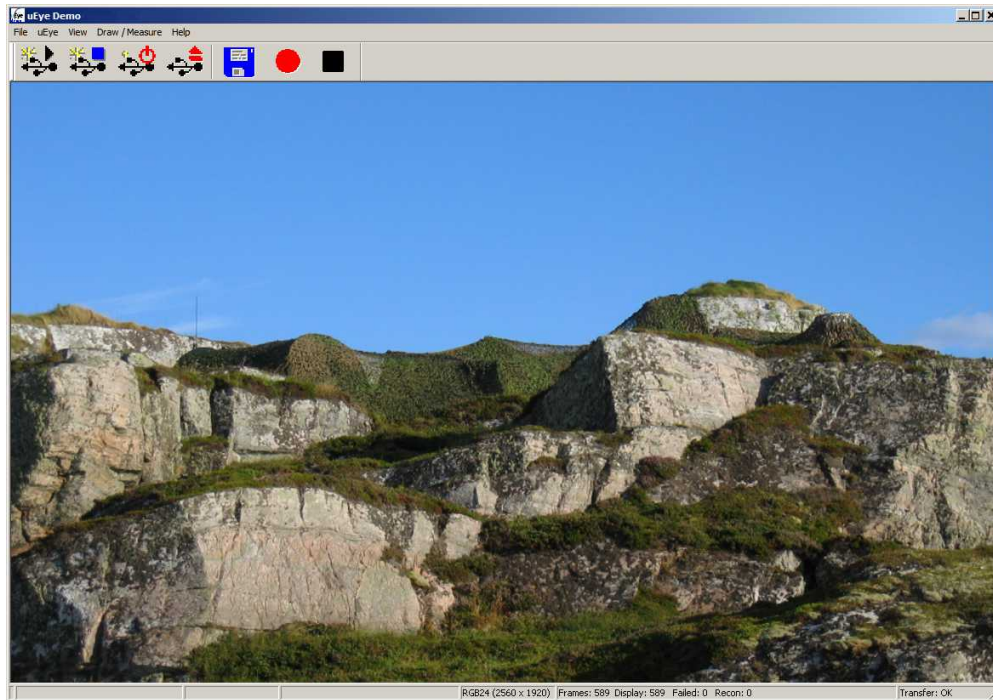
Web: www.optec.no

Version 01.01
Oktober 2014

Optec AS reserves the right to change all the technical data in this product information at any time without notice.



Pecten EyeCam Software description



Capture images

Pictures can be stored as JPEG file format with a fixed resolution of 2560 x 1920 pixels @ max 15,2 fps

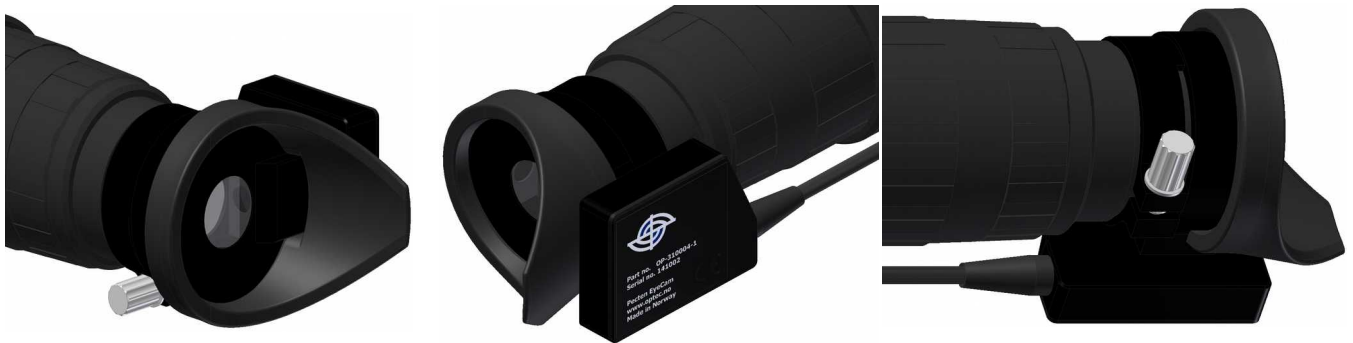
Record videos

Videos can be stored as AVI file format with a fixed resolution of 1280 x 960 pixels @ 25 fps.

Pictures or videos can easily be distributed over standard networks to other PC's.

PC Requirements

- 1 gigahertz (GHz), 32-bit (x86) or 64-bit (x64)
- Windows7 (32/64)
- 1GB RAM (2 GB or more recommended)
- Minimum 1 GB free hard disk space
- DVD/CD – ROM drive must be available
- Available ports: USB 3.0 port for camera (Can also be used with USB2 with lower FPS)
- Monitor resolution 1280x800 pixels minimum
- Mouse or other pointing device



Optec AS

Nedre Møllenberg gt 32
7014 Trondheim

Norway

Phone: +47 73 52 48 00

Mail: optec@optec.no

Web: www.optec.no

Version 01.01
Oktober 2014

Optec AS reserves the right to change all the technical data in this product information at any time without notice.